



# WOOD FLOORS PLUS

Maryland's Largest Flooring Store!

EFFECTIVE FEB 2020

# STOCKING CABINETS

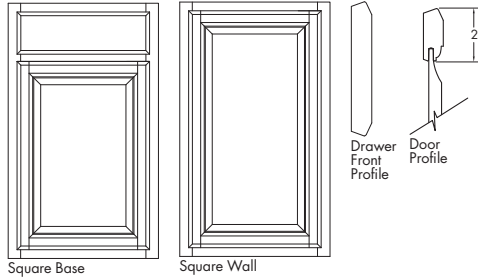


Find all the essentials you need to create smart spaces with mainstream styles and colors at a great value for any kitchen, bathroom, or storage space design.

## CHESNEY

### AUTUMN • SARSAPARILLA

- Partial overlay
- Birch veneered center panel door
- Beveled slab profile drawer front



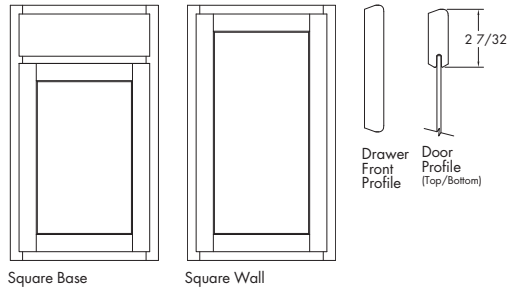
### Wall Cabinet Construction

- 1/2" Plywood top and bottom
- 3/4" Plywood adjustable shelves (15 lbs. maximum weight/sq. ft.)
- 3/4" x 1 1/2" Solid wood face frame
- 3/8" Plywood sides and back

## BOWMAN

### FLAGSTONE • UMBER WHITE PAINT

- Partial overlay
- Flat veneered center panel door
- 3/4" thick solid door rail



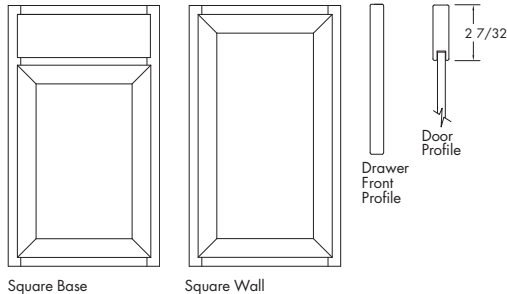
### Base Cabinet Construction

- Two plywood stretcher rails
- 3/8" Plywood back, bottom and sides
- 3/4" x 1 1/2" Solid wood face frame
- 3/4" Half-depth plywood shelf
- 3/8" x 4" High plywood recessed toekick (recessed 3" deep)

## ELLIS

### STONE GRAY • COLADA

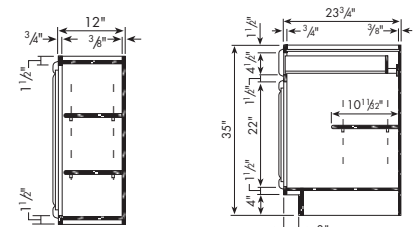
- 5/8" Thick Purestyle Laminate Door
- Miter Construction
- Flat Laminate Center Panel



### Drawer Box Construction

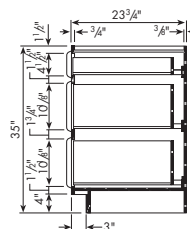
- 3/4" Nominal thick wood dovetailed drawer sides, front and back with clear topcoat
- 1/4" Thick plywood drawer bottom, fully captured for added strength and optimum load capacity
- Full-extension undermount drawer guides with Smart Stop self-closing mechanism

### Cabinet Dimensions

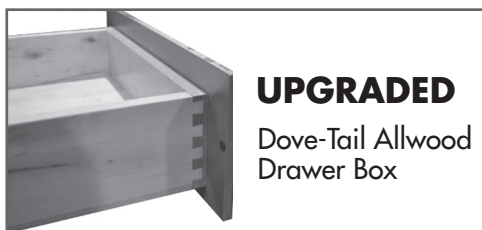


Wall Cabinet

Base Cabinet

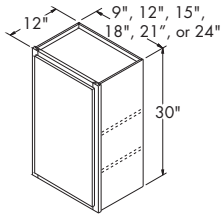


3-Drawer Base Cabinet



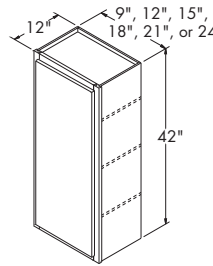
# WALL CABINETS STRAIGHT

Wall cabinets fill the space of the wall between appliances and fixtures.



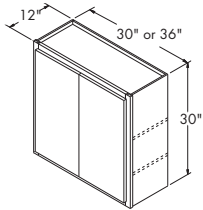
**Single Door Wall  
30" High x 12" Deep**

	AUTUMN, SARSAPARILLA UMBER, FLAGSTONE	WHITE PAINT, COLADA STONE GRAY
9" wide	\$89 <sup>00</sup>	\$112 <sup>00</sup>
12" wide	\$89 <sup>00</sup>	\$112 <sup>00</sup>
15" wide	\$97 <sup>00</sup>	\$123 <sup>00</sup>
18" wide	\$106 <sup>00</sup>	\$134 <sup>00</sup>
21" wide	\$115 <sup>00</sup>	\$144 <sup>00</sup>
24" wide	\$124 <sup>00</sup>	\$157 <sup>00</sup>



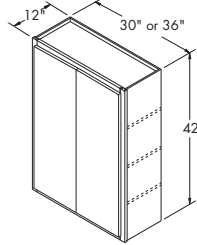
**Single Door Wall  
42" High x 12" Deep**

	AUTUMN, SARSAPARILLA UMBER, FLAGSTONE	WHITE PAINT, COLADA STONE GRAY
9" wide	\$116 <sup>00</sup>	\$148 <sup>00</sup>
12" wide	\$116 <sup>00</sup>	\$148 <sup>00</sup>
15" wide	\$131 <sup>00</sup>	\$165 <sup>00</sup>
18" wide	\$139 <sup>00</sup>	\$176 <sup>00</sup>
21" wide	\$151 <sup>00</sup>	\$190 <sup>00</sup>
24" wide	\$165 <sup>00</sup>	\$207 <sup>00</sup>



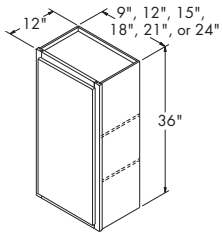
**Double Door Wall  
30" High x 12" Deep**

	AUTUMN, SARSAPARILLA UMBER, FLAGSTONE	WHITE PAINT, COLADA STONE GRAY
30" wide	\$143 <sup>00</sup>	\$180 <sup>00</sup>
36" wide	\$162 <sup>00</sup>	\$206 <sup>00</sup>



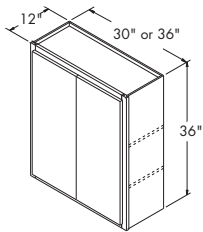
**Double Door Wall  
42" High x 12" Deep**

	AUTUMN, SARSAPARILLA UMBER, FLAGSTONE	WHITE PAINT, COLADA STONE GRAY
30" wide	\$190 <sup>00</sup>	\$240 <sup>00</sup>
36" wide	\$215 <sup>00</sup>	\$271 <sup>00</sup>



**Single Door Wall  
36" High x 12" Deep**

	AUTUMN, SARSAPARILLA UMBER, FLAGSTONE	WHITE PAINT, COLADA STONE GRAY
9" wide	\$104 <sup>00</sup>	\$131 <sup>00</sup>
12" wide	\$104 <sup>00</sup>	\$131 <sup>00</sup>
15" wide	\$113 <sup>00</sup>	\$142 <sup>00</sup>
18" wide	\$121 <sup>00</sup>	\$155 <sup>00</sup>
21" wide	\$132 <sup>00</sup>	\$168 <sup>00</sup>
24" wide	\$145 <sup>00</sup>	\$184 <sup>00</sup>



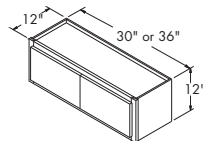
**Double Door Wall  
36" High x 12" Deep**

	AUTUMN, SARSAPARILLA UMBER, FLAGSTONE	WHITE PAINT, COLADA STONE GRAY
30" wide	\$166 <sup>00</sup>	\$209 <sup>00</sup>
36" wide	\$190 <sup>00</sup>	\$240 <sup>00</sup>

# WALL CABINETS OVER APPLIANCE

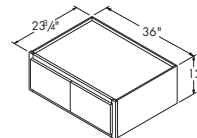
Wall Cabinets that are usually located above microwave hoods, range vents or refrigerators.

23 3/4" deep refrigerator wall cabinets must be supported on 3 sides.



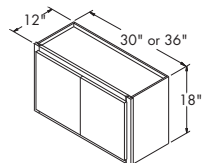
**Double Door Wall  
12" High x 12" Deep**

	AUTUMN, SARSAPARILLA UMBER, FLAGSTONE	WHITE PAINT, COLADA STONE GRAY
30" wide	\$96 <sup>00</sup>	\$121 <sup>00</sup>
36" wide	\$115 <sup>00</sup>	\$144 <sup>00</sup>



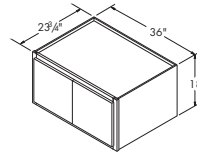
**Double Door Refrigerator Wall  
12" High x 23 3/4" Deep**

	AUTUMN, SARSAPARILLA UMBER, FLAGSTONE	WHITE PAINT, COLADA STONE GRAY
36" wide	\$130 <sup>00</sup>	\$163 <sup>00</sup>



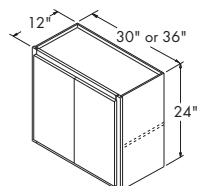
**Double Door Wall  
18" High x 12" Deep**

	AUTUMN, SARSAPARILLA UMBER, FLAGSTONE	WHITE PAINT, COLADA STONE GRAY
30" wide	\$115 <sup>00</sup>	\$144 <sup>00</sup>
36" wide	\$123 <sup>00</sup>	\$155 <sup>00</sup>



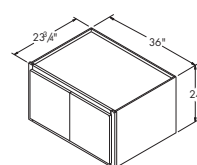
**Double Door Refrigerator Wall  
18" High x 23 3/4" Deep**

	AUTUMN, SARSAPARILLA UMBER, FLAGSTONE	WHITE PAINT, COLADA STONE GRAY
36" wide	\$139 <sup>00</sup>	\$177 <sup>00</sup>



**Double Door Wall  
24" High x 12" Deep**

	AUTUMN, SARSAPARILLA UMBER, FLAGSTONE	WHITE PAINT, COLADA STONE GRAY
30" wide	\$130 <sup>00</sup>	\$162 <sup>00</sup>
36" wide	\$143 <sup>00</sup>	\$180 <sup>00</sup>



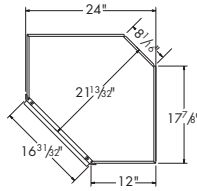
**Double Door Refrigerator Wall  
24" High x 23 3/4" Deep**

	AUTUMN, SARSAPARILLA UMBER, FLAGSTONE	WHITE PAINT, COLADA STONE GRAY
36" wide	\$158 <sup>00</sup>	\$201 <sup>00</sup>

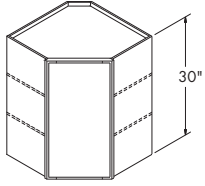
Pricing subject to change without notice. Additional shipping/delivery fees may apply.

# WALL CABINETS CORNER

Wall corner cabinets are used to turn corners in your kitchen. They take up 24 inches of wall space on both sides of the corner and feature a diagonal door for easier access.



## Diagonal Wall Corner 30" High

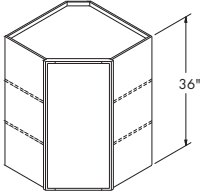


24" wide

AUTUMN, SARSAPARILLA  
UMBER, FLAGSTONE  
**\$150<sup>00</sup>**

WHITE PAINT, COLADA  
STONE GRAY  
**\$181<sup>00</sup>**

## Diagonal Wall Corner 36" High

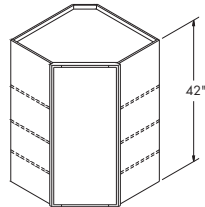


24" wide

AUTUMN, SARSAPARILLA  
UMBER, FLAGSTONE  
**\$173<sup>00</sup>**

WHITE PAINT, COLADA  
STONE GRAY  
**\$217<sup>00</sup>**

## Diagonal Wall Corner 42" High



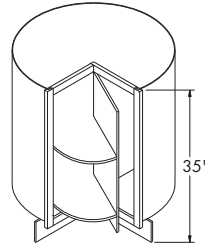
24" wide

AUTUMN, SARSAPARILLA  
UMBER, FLAGSTONE  
**\$202<sup>00</sup>**

WHITE PAINT, COLADA  
STONE GRAY  
**\$248<sup>00</sup>**

# BASE CABINETS CORNER

Base corner cabinets are used to turn corners in the kitchen. The Lazy Susan cabinet offers a great solution for storage, while the Blind Base is convenient for small or tight kitchen corners.

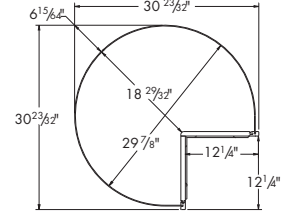


## Lazy Susan Roto 35" High

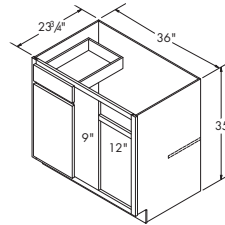
36" wide

AUTUMN, SARSAPARILLA  
UMBER, FLAGSTONE  
**\$250<sup>00</sup>**

WHITE PAINT, COLADA  
STONE GRAY  
**\$313<sup>00</sup>**



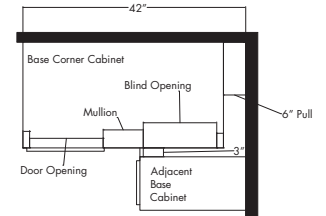
## Blind Base Corner 35" High Ships with 3" Filler



42" wide (36" Act)

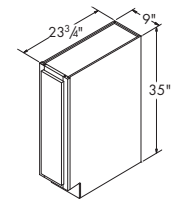
AUTUMN, SARSAPARILLA  
UMBER, FLAGSTONE  
**\$180<sup>00</sup>**

WHITE PAINT, COLADA  
STONE GRAY  
**\$225<sup>00</sup>**



# BASE CABINETS STRAIGHT

Base cabinets that fill the space of the wall between appliances and fixtures.

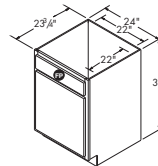


## Single Door Base 35" High x 23 3/4" Deep

9" wide

AUTUMN, SARSAPARILLA  
UMBER, FLAGSTONE  
**\$97<sup>00</sup>**

WHITE PAINT, COLADA  
STONE GRAY  
**\$123<sup>00</sup>**

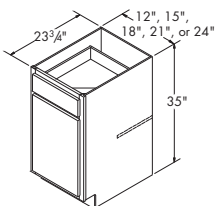


## Single Door Sink Base 35" High x 23 3/4" Deep

24" wide

AUTUMN, SARSAPARILLA  
UMBER, FLAGSTONE  
**\$131<sup>00</sup>**

WHITE PAINT, COLADA  
STONE GRAY  
**\$165<sup>00</sup>**



## Single Door/Drawer Base 35" High x 23 3/4" Deep

12" wide

AUTUMN, SARSAPARILLA  
UMBER, FLAGSTONE  
**\$124<sup>00</sup>**

WHITE PAINT, COLADA  
STONE GRAY  
**\$152<sup>00</sup>**

15" wide

**\$129<sup>00</sup>**

**\$160<sup>00</sup>**

18" wide

**\$137<sup>00</sup>**

**\$170<sup>00</sup>**

21" wide

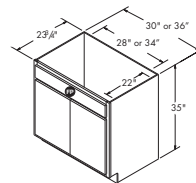
**\$144<sup>00</sup>**

**\$178<sup>00</sup>**

24" wide

**\$165<sup>00</sup>**

**\$205<sup>00</sup>**



## Double Door Sink Base 35" High x 23 3/4" Deep

30" wide

AUTUMN, SARSAPARILLA  
UMBER, FLAGSTONE  
**\$145<sup>00</sup>**

WHITE PAINT, COLADA  
STONE GRAY  
**\$183<sup>00</sup>**

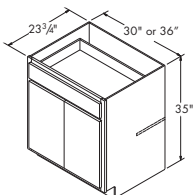
36" wide

**\$166<sup>00</sup>**

**\$209<sup>00</sup>**

# BASE CABINETS DRAWERS

Base cabinets with drawers. This can allow for more defined organization, but can also restrict storage space height.



## Double Door/Single Drawer Base 35" High x 23 3/4" Deep

30" wide

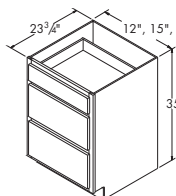
AUTUMN, SARSAPARILLA  
UMBER, FLAGSTONE  
**\$188<sup>00</sup>**

WHITE PAINT, COLADA  
STONE GRAY  
**\$234<sup>00</sup>**

36" wide

**\$203<sup>00</sup>**

**\$255<sup>00</sup>**



## 3-Drawer Base 35" High x 23 3/4" Deep

12" wide

AUTUMN, SARSAPARILLA  
UMBER, FLAGSTONE  
**\$161<sup>00</sup>**

WHITE PAINT, COLADA  
STONE GRAY  
**\$189<sup>00</sup>**

15" wide

**\$164<sup>00</sup>**

**\$192<sup>00</sup>**

18" wide

**\$177<sup>00</sup>**

**\$204<sup>00</sup>**

24" wide

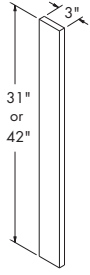
**\$194<sup>00</sup>**

**\$221<sup>00</sup>**

Pricing subject to change without notice. Additional shipping/delivery fees may apply.

# Fillers

Fillers are used to fill spaces between cabinets or against walls.

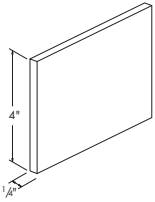


## Cabinet Filler 3" Wide x 3/4" Thick

	AUTUMN, SARSAPARILLA UMBER, FLAGSTONE	WHITE PAINT, COLADA STONE GRAY
31" high	\$19 <sup>00</sup>	\$19 <sup>00</sup>
42" high	\$21 <sup>00</sup>	\$22 <sup>00</sup>

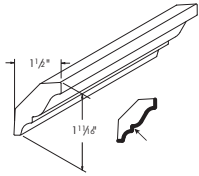
# Moldings

Moldings are accessory pieces used for finishing a cabinet installation.



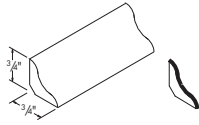
## Toekick 4" High x 1/4" Thick x 96" Long

	AUTUMN, SARSAPARILLA UMBER, FLAGSTONE	WHITE PAINT, COLADA STONE GRAY
TOEKICK	\$12 <sup>00</sup>	\$20 <sup>00</sup>



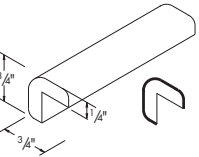
## Crown 1 11/16" High x 1 1/2" Deep x 96" Long

	AUTUMN, SARSAPARILLA UMBER, FLAGSTONE	WHITE PAINT, COLADA STONE GRAY
MCROWN8	\$40 <sup>00</sup>	\$49 <sup>00</sup>



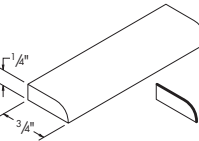
## Cove 3/4" High x 3/4" Deep x 96" Long

	AUTUMN, SARSAPARILLA UMBER, FLAGSTONE	WHITE PAINT, COLADA STONE GRAY
MCV8	\$17 <sup>00</sup>	\$19 <sup>00</sup>



## Outside Corner 3/4" High x 3/4" Deep x 96" Long

	AUTUMN, SARSAPARILLA UMBER, FLAGSTONE	WHITE PAINT, COLADA STONE GRAY
MOCW8	\$17 <sup>00</sup>	\$19 <sup>00</sup>

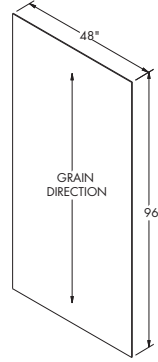


## Scribe 1/4" High x 3/4" Deep x 96" Long

	AUTUMN, SARSAPARILLA UMBER, FLAGSTONE	WHITE PAINT, COLADA STONE GRAY
MSW8	\$10 <sup>00</sup>	\$15 <sup>00</sup>

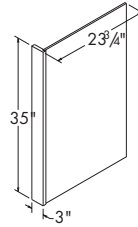
# Panels

Panels are used to cover the ends of appliances, backs of cabinets, or ends of a cabinet run.



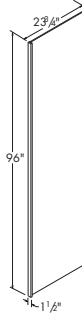
## Plywood Sheet 48" Wide x 96" Tall x 3/16" Thick

	AUTUMN, SARSAPARILLA UMBER, FLAGSTONE	WHITE PAINT, COLADA STONE GRAY
P4896	\$143 <sup>00</sup>	\$168 <sup>00</sup>



## Dishwasher End Panel 35" Tall x 23 2/4" Deep

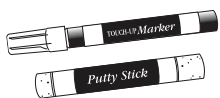
	AUTUMN, SARSAPARILLA UMBER, FLAGSTONE	WHITE PAINT, COLADA STONE GRAY
PRLY335	\$63 <sup>00</sup>	\$64 <sup>00</sup>



## Refrigerator End Panel 96" Tall x 23 2/4" Deep

	AUTUMN, SARSAPARILLA UMBER, FLAGSTONE	WHITE PAINT, COLADA STONE GRAY
1.5REP96	\$160 <sup>00</sup>	\$164 <sup>00</sup>

# Touch-up Kit



## Touch-up Kit Includes 1 Felt Marker, 1 Putty Stick

TUKIT	\$18 <sup>00</sup>
-------	--------------------

Pricing subject to change without notice. Additional shipping/delivery fees may apply.