



# WOOD FLOORS PLUS

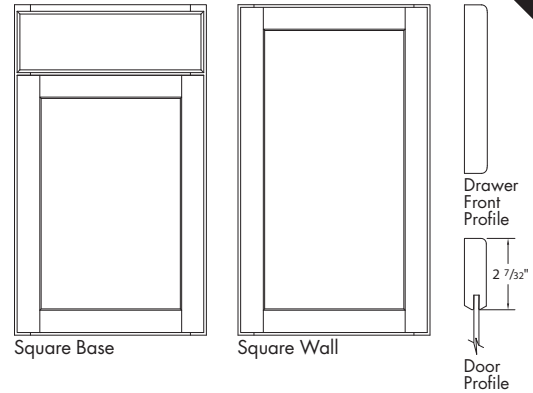
Maryland's Largest Flooring Store!

# STOCKING CABINETS

Find all the essentials you need to create smart spaces with mainstream styles and colors at a great value for any kitchen, bathroom, or storage space design.

## MALDEN WHITE PAINT

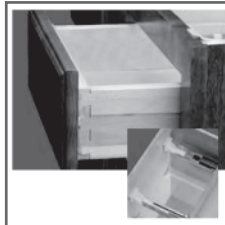
- Full overlay
- Birch recessed veneered center panel door
- Slab drawer front



**PAINT DISCLAIMER** – Paint will develop hairline cracks in the finish, most notable around the joints. This is a result of natural expansion and contraction of the genuine hardwoods used in manufacturing. Hairline cracks are not considered a defect in the cabinetry or finish and will not be considered a reason for product warranty.



**UPGRADED**  
Gentle-Touch  
Soft-Close Hinge



**UPGRADED**  
Dove-Tail Allwood  
Drawer Box  
Soft-Close &  
Full-Extension Glides



**UPGRADED**  
All Plywood  
Cabinet Box

### Wall Cabinet Construction

- 1/2" Plywood top and bottom
- 3/4" Plywood adjustable shelves (15 lbs. maximum weight/sq. ft.)
- 3/4" x 1 1/2" Solid wood face frame
- 3/8" Plywood sides and back
- Cabinet interior features natural maple laminate
- Matching laminate exterior
- Fully concealed, 6-way adjustable, integrated cup hinge with Smart Stop™ self-closing feature
- Butt doors on cabinets 30" – 36" wide

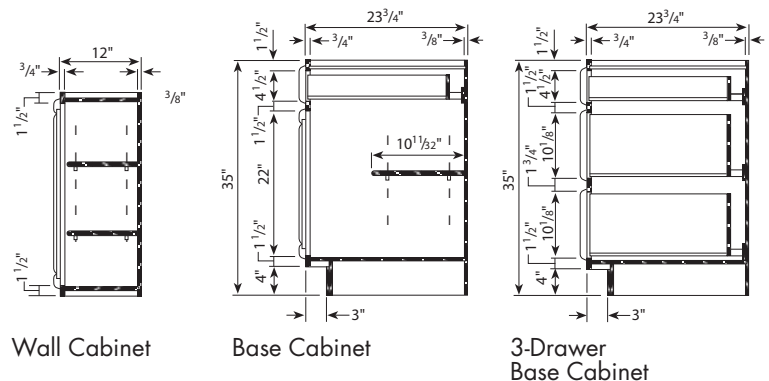
### Base Cabinet Construction

- Two plywood stretcher rails
- 3/8" Plywood back, bottom and sides
- 3/4" x 1 1/2" Solid wood face frame
- 3/4" Half-depth plywood shelf
- 3/8" x 4" High plywood recessed toekick (recessed 3" deep)
- Recessed toekick is unfinished plywood and requires toekick cover
- Cabinet interior features natural maple laminate
- Matching laminate exterior
- Fully concealed, 6-way adjustable, integrated cup hinge with Smart Stop self-closing feature
- Butt doors on cabinets 30" – 36" wide

### Drawer Box Construction

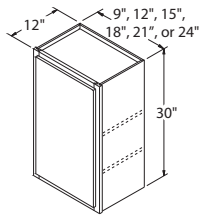
- 3/4" Nominal thick wood dovetailed drawer sides, front and back with clear topcoat
- 1/4" Thick plywood drawer bottom, fully captured for added strength and optimum load capacity
- Full-extension undermount drawer guides with Smart Stop self-closing mechanism

### Cabinet Dimension Details



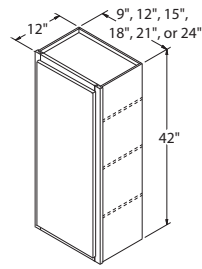
# WALL CABINETS STRAIGHT

Wall cabinets that fill the space of the wall between appliances and fixtures.



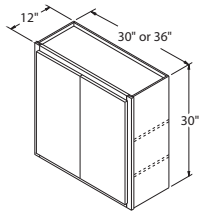
**Single Door Wall  
30" High x 12" Deep**

9" wide	\$126 <sup>00</sup>
12" wide	\$126 <sup>00</sup>
15" wide	\$139 <sup>00</sup>
18" wide	\$152 <sup>00</sup>
21" wide	\$168 <sup>00</sup>
24" wide	\$178 <sup>00</sup>



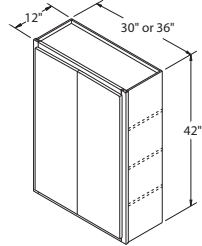
**Single Door Wall  
42" High x 12" Deep**

9" wide	\$166 <sup>00</sup>
12" wide	\$166 <sup>00</sup>
15" wide	\$185 <sup>00</sup>
18" wide	\$198 <sup>00</sup>
21" wide	\$223 <sup>00</sup>
24" wide	\$234 <sup>00</sup>



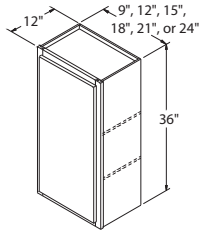
**Double Door Wall  
30" High x 12" Deep**

30" wide	\$203 <sup>00</sup>
36" wide	\$231 <sup>00</sup>



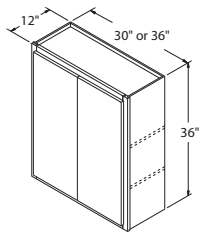
**Double Door Wall  
42" High x 12" Deep**

30" wide	\$269 <sup>00</sup>
36" wide	\$306 <sup>00</sup>



**Single Door Wall  
36" High x 12" Deep**

9" wide	\$147 <sup>00</sup>
12" wide	\$147 <sup>00</sup>
15" wide	\$160 <sup>00</sup>
18" wide	\$175 <sup>00</sup>
21" wide	\$196 <sup>00</sup>
24" wide	\$206 <sup>00</sup>



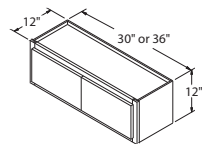
**Double Door Wall  
36" High x 12" Deep**

30" wide	\$236 <sup>00</sup>
36" wide	\$269 <sup>00</sup>

# WALL CABINETS OVER APPLIANCE

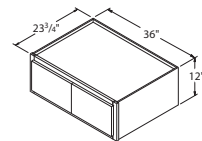
Wall Cabinets that are usually located above microwave hoods, range vents or refrigerators.

23 3/4" deep refrigerator wall cabinets must be supported on 3 sides.



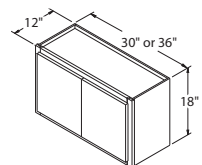
**Double Door Wall  
12" High x 12" Deep**

30" wide	\$137 <sup>00</sup>
36" wide	\$161 <sup>00</sup>



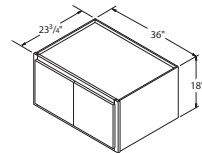
**Double Door Refrigerator Wall  
12" High x 23 3/4" Deep**

36" wide	\$184 <sup>00</sup>
----------	---------------------



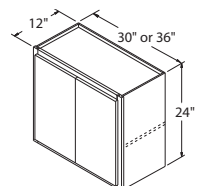
**Double Door Wall  
18" High x 12" Deep**

30" wide	\$161 <sup>00</sup>
36" wide	\$175 <sup>00</sup>



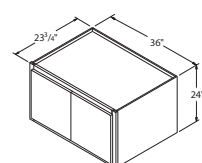
**Double Door Refrigerator Wall  
18" High x 23 3/4" Deep**

36" wide	\$199 <sup>00</sup>
----------	---------------------



**Double Door Wall  
24" High x 12" Deep**

30" wide	\$184 <sup>00</sup>
36" wide	\$203 <sup>00</sup>

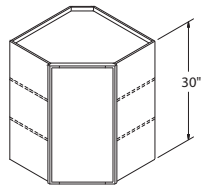
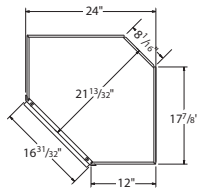


**Double Door Refrigerator Wall  
24" High x 23 3/4" Deep**

36" wide	\$227 <sup>00</sup>
----------	---------------------

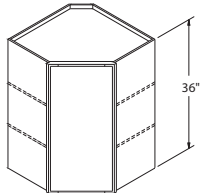
# WALL CABINETS CORNER

Wall corner cabinets are used to turn corners in your kitchen. They take up 24 inches of wall space on both sides of the corner and feature a diagonal door for easier access.



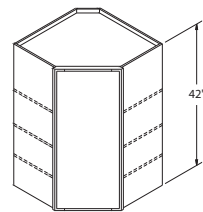
## Diagonal Wall Corner 30" High

24" wide **\$204<sup>00</sup>**



## Diagonal Wall Corner 36" High

24" wide **\$244<sup>00</sup>**

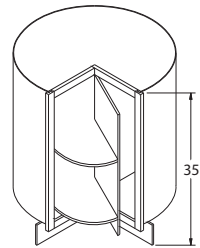


## Diagonal Wall Corner 42" High

24" wide **\$279<sup>00</sup>**

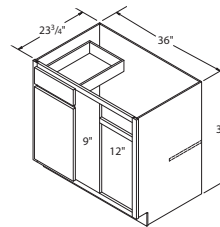
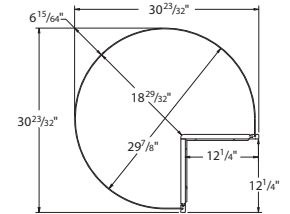
# BASE CABINETS CORNER

Base corner cabinets are used to turn corners in the kitchen. The Lazy Susan cabinet offers a great solution for storage, while the Blind Base is convenient for small or tight kitchen corners.



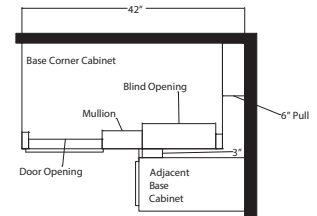
## Lazy Susan Roto 35" High

36" wide **\$353<sup>00</sup>**



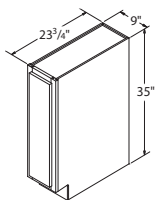
## Blind Base Corner 35" High Ships with 3" Filler

42" wide (36" Act) **\$252<sup>00</sup>**



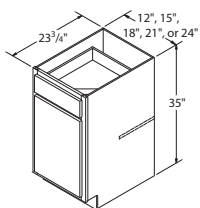
# BASE CABINETS STRAIGHT

Base cabinets that fill the space of the wall between appliances and fixtures.



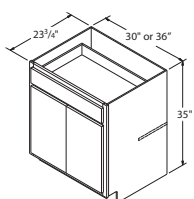
## Single Door Base 35" High x 23 3/4" Deep

9" wide **\$145<sup>00</sup>**



## Single Door/Drawer Base 35" High x 23 3/4" Deep

12" wide **\$177<sup>00</sup>**  
 15" wide **\$184<sup>00</sup>**  
 18" wide **\$196<sup>00</sup>**  
 21" wide **\$222<sup>00</sup>**  
 24" wide **\$235<sup>00</sup>**

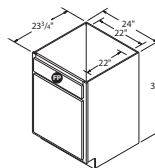


## Double Door/Single Drawer Base 35" High x 23 3/4" Deep

30" wide **\$285<sup>00</sup>**  
 36" wide **\$309<sup>00</sup>**

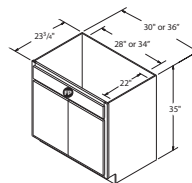
# BASE CABINETS SINKS

Sink Base Cabinets feature a false drawer panel to allow space to locate a drop-in or under-mounted sink. Can also be used for a drop-in cooktop.



## Single Door Sink Base 35" High x 23 3/4" Deep

24" wide **\$186<sup>00</sup>**

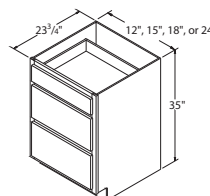


## Double Door Sink Base 35" High x 23 3/4" Deep

30" wide **\$205<sup>00</sup>**  
 36" wide **\$236<sup>00</sup>**

# BASE CABINETS DRAWERS

Base cabinets with drawers. This can allow for more defined organization, but can also restrict storage space height.

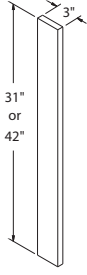


## 3-Drawer Base 35" High x 23 3/4" Deep

12" wide **\$191<sup>00</sup>**  
 15" wide **\$193<sup>00</sup>**  
 18" wide **\$206<sup>00</sup>**  
 24" wide **\$245<sup>00</sup>**

# Fillers

Fillers are used to fill spaces between cabinets or against walls.

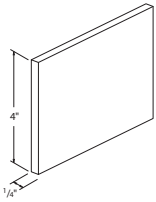


**Base Cabinet Filler**  
**31" High x 3" Wide x 3/4" Thick**  
 31" high \$19<sup>00</sup>

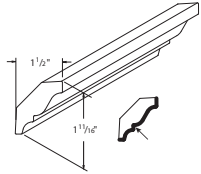
**Wall Cabinet Filler**  
**42" High x 3" Wide x 3/4" Thick**  
 42" high \$21<sup>00</sup>

# Moldings

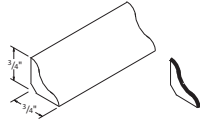
Moldings are accessory pieces used for finishing a cabinet installation.



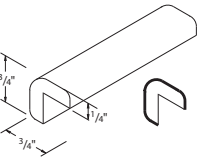
**Toekick**  
**4" High x 1/4" Thick x 96" Long**  
 TOEKICK \$20<sup>00</sup>



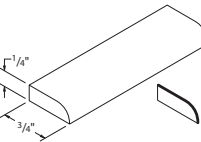
**Crown**  
**1 1/16" High x 1 1/2" Deep x 96" Long**  
 MCROWN8 \$49<sup>00</sup>



**Cove**  
**3/4" High x 3/4" Deep x 96" Long**  
 MCV8 \$19<sup>00</sup>



**Outside Corner**  
**3/4" High x 3/4" Deep x 96" Long**  
 MOCW8 \$19<sup>00</sup>



**Scribe**  
**1/4" High x 3/4" Deep x 96" Long**  
 MSW8 \$15<sup>00</sup>

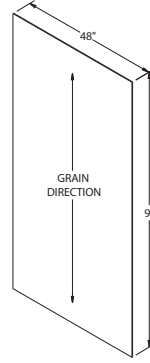
# Touch-up Kit



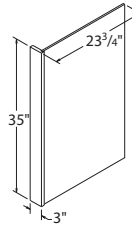
**Touch-up Kit**  
**Includes 1 Felt Marker, 1 Putty Stick**  
 TUKIT \$18<sup>00</sup>

# Panels

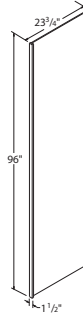
Panels are used to cover the ends of appliances, backs of cabinets, or ends of a cabinet run.



**Plywood Sheet**  
**48" Wide x 96" Tall x 3/16" Thick**  
 P4896 \$149<sup>00</sup>



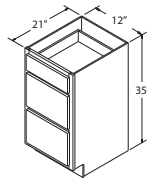
**Dishwasher End Panel**  
**35" Tall x 23 2/4" Deep**  
 PRLY335 \$63<sup>00</sup>



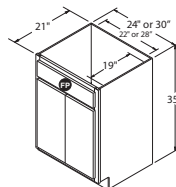
**Refrigerator End Panel**  
**96" Tall x 23 2/4" Deep**  
 1.5REP96 \$160<sup>00</sup>

# Vanities

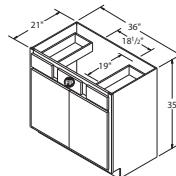
Vanities are cabinets used in bathrooms and are shallower in depth as compared to kitchen cabinets.



**3 Drawer Vanity Base**  
**35" High x 21" Deep**  
 12" wide \$180<sup>00</sup>



**Double Door Vanity Base**  
**35" High x 21" Deep**  
 24" wide \$200<sup>00</sup>  
 30" wide \$225<sup>00</sup>



**Double Door, 2 Drawer Vanity Base**  
**35" High x 21" Deep**  
 36" wide \$350<sup>00</sup>