



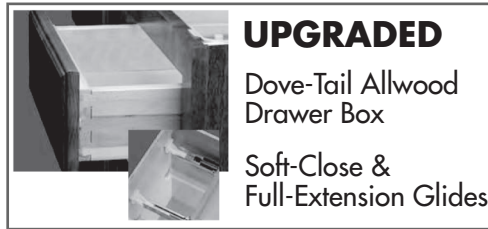
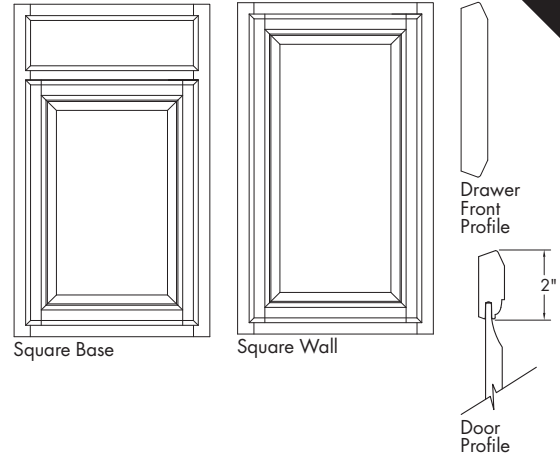
Find all the essentials you need to create smart spaces with mainstream styles and colors at a great value for any kitchen, bathroom, or storage space design.

CHESNEY

ROUGE • SARSAPARILLA



- Partial overlay
- Birch veneered raised center panel door
- Beveled slab profile drawer front



Wall Cabinet Construction

- 1/2" Plywood top and bottom
- 3/4" Plywood adjustable shelves (15 lbs. maximum weight/sq. ft.)
- 3/4" x 1 1/2" Solid wood face frame
- 3/8" Plywood sides and back
- Cabinet interior features natural maple laminate
- Matching laminate exterior
- Fully concealed, 6-way adjustable, integrated cup hinge with Smart Stop™ self-closing feature
- Butt doors on cabinets 30" – 36" wide

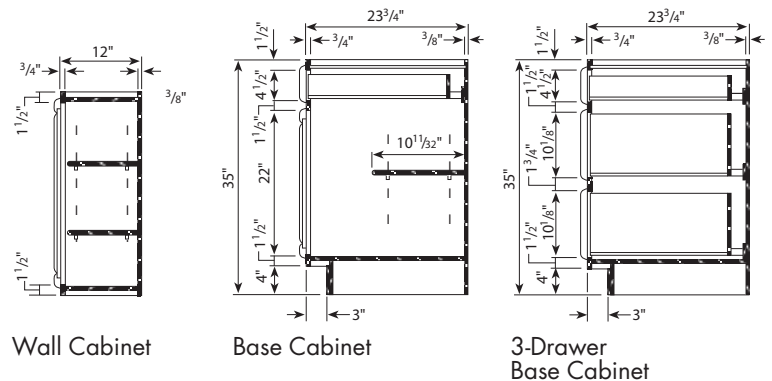
Base Cabinet Construction

- Two plywood stretcher rails
- 3/8" Plywood back, bottom and sides
- 3/4" x 1 1/2" Solid wood face frame
- 3/4" Half-depth plywood shelf
- 3/8" x 4" High plywood recessed toe-kick (recessed 3" deep)
- Recessed toe-kick is unfinished plywood and requires toe-kick cover
- Cabinet interior features natural maple laminate
- Matching laminate exterior
- Fully concealed, 6-way adjustable, integrated cup hinge with Smart Stop™ self-closing feature
- Butt doors on cabinets 30" – 36" wide

Drawer Box Construction

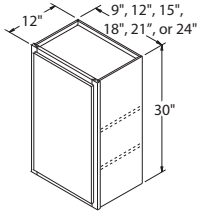
- 3/4" Nominal thick wood dovetailed drawer sides, front and back with clear topcoat
- 1/4" Thick plywood drawer bottom, fully captured for added strength and optimum load capacity
- Full-extension undermount drawer guides with Smart Stop self-closing mechanism

Cabinet Dimension Details



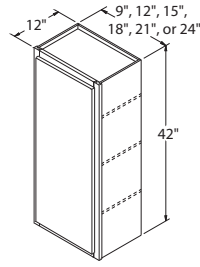
WALL CABINETS STRAIGHT

Wall cabinets that fill the space of the wall between appliances and fixtures.



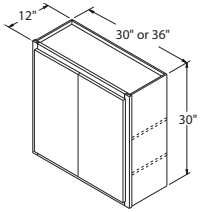
Single Door Wall 30" High x 12" Deep

9" wide	\$82 ⁰⁰
12" wide	\$82 ⁰⁰
15" wide	\$90 ⁰⁰
18" wide	\$98 ⁰⁰
21" wide	\$110 ⁰⁰
24" wide	\$115 ⁰⁰



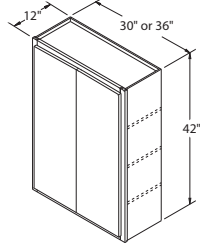
Single Door Wall 42" High x 12" Deep

9" wide	\$107 ⁰⁰
12" wide	\$107 ⁰⁰
15" wide	\$121 ⁰⁰
18" wide	\$129 ⁰⁰
21" wide	\$145 ⁰⁰
24" wide	\$153 ⁰⁰



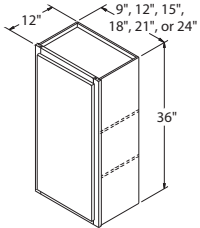
Double Door Wall 30" High x 12" Deep

30" wide	\$132 ⁰⁰
36" wide	\$150 ⁰⁰



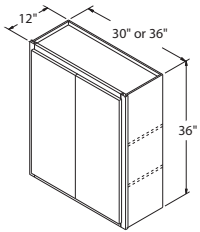
Double Door Wall 42" High x 12" Deep

30" wide	\$174 ⁰⁰
36" wide	\$198 ⁰⁰



Single Door Wall 36" High x 12" Deep

9" wide	\$96 ⁰⁰
12" wide	\$96 ⁰⁰
15" wide	\$104 ⁰⁰
18" wide	\$113 ⁰⁰
21" wide	\$124 ⁰⁰
24" wide	\$134 ⁰⁰



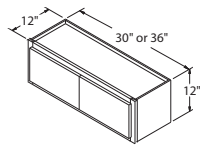
Double Door Wall 36" High x 12" Deep

30" wide	\$153 ⁰⁰
36" wide	\$174 ⁰⁰

WALL CABINETS OVER APPLIANCE

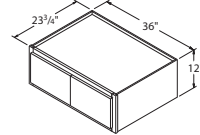
Wall Cabinets that are usually located above microwave hoods, range vents or refrigerators.

23 3/4" deep refrigerator wall cabinets must be supported on 3 sides.



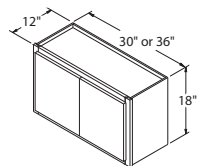
Double Door Wall 12" High x 12" Deep

30" wide	\$89 ⁰⁰
36" wide	\$105 ⁰⁰



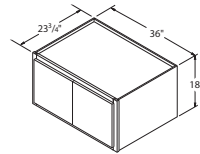
Double Door Refrigerator Wall 12" High x 23 3/4" Deep

36" wide	\$120 ⁰⁰
----------	---------------------



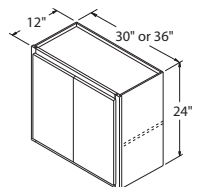
Double Door Wall 18" High x 12" Deep

30" wide	\$105 ⁰⁰
36" wide	\$114 ⁰⁰



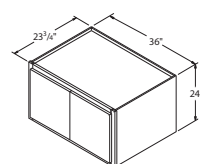
Double Door Refrigerator Wall 18" High x 23 3/4" Deep

36" wide	\$129 ⁰⁰
----------	---------------------



Double Door Wall 24" High x 12" Deep

30" wide	\$120 ⁰⁰
36" wide	\$131 ⁰⁰

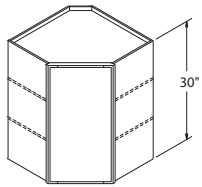
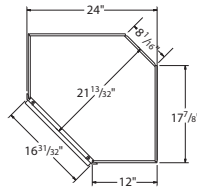


Double Door Refrigerator Wall 24" High x 23 3/4" Deep

36" wide	\$146 ⁰⁰
----------	---------------------

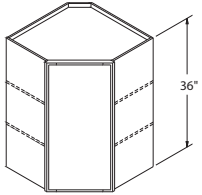
WALL CABINETS CORNER

Wall corner cabinets are used to turn corners in your kitchen. They take up 24 inches of wall space on both sides of the corner and feature a diagonal door for easier access.



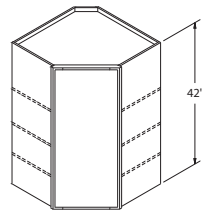
Diagonal Wall Corner 30" High

24" wide \$138⁰⁰



Diagonal Wall Corner 36" High

24" wide \$160⁰⁰

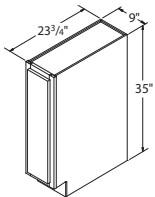


Diagonal Wall Corner 42" High

24" wide \$186⁰⁰

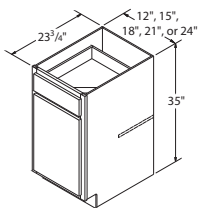
BASE CABINETS STRAIGHT

Base cabinets that fill the space of the wall between appliances and fixtures.



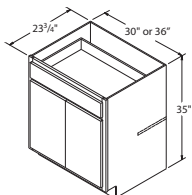
Single Door Base 35" High x 23 3/4" Deep

9" wide \$93⁰⁰



Single Door/Drawer Base 35" High x 23 3/4" Deep

12" wide \$118⁰⁰
 15" wide \$122⁰⁰
 18" wide \$130⁰⁰
 21" wide \$147⁰⁰
 24" wide \$156⁰⁰

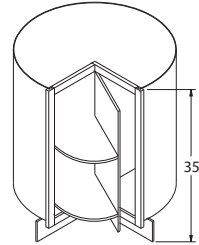


Double Door/Single Drawer Base 35" High x 23 3/4" Deep

30" wide \$191⁰⁰
 36" wide \$205⁰⁰

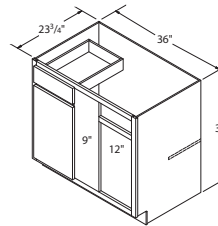
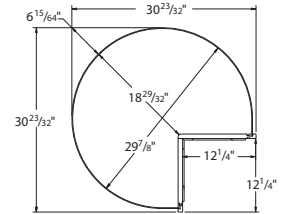
BASE CABINETS CORNER

Base corner cabinets are used to turn corners in the kitchen. The Lazy Susan cabinet offers a great solution for storage, while the Blind Base is convenient for small or tight kitchen corners.



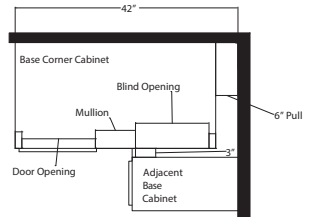
Lazy Susan Roto 35" High

36" wide \$229⁰⁰



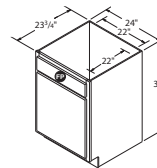
Blind Base Corner 35" High Ships with 3" Filler

42" wide (36" Act) \$182⁰⁰



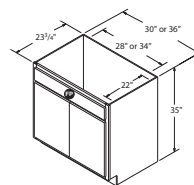
BASE CABINETS SINKS

Sink Base Cabinets feature a false drawer panel to allow space to locate a drop-in or under-mounted sink. Can also be used for a drop-in cooktop.



Single Door Sink Base 35" High x 23 3/4" Deep

24" wide \$121⁰⁰

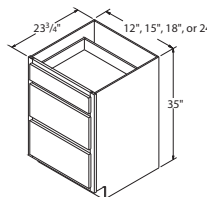


Double Door Sink Base 35" High x 23 3/4" Deep

30" wide \$134⁰⁰
 36" wide \$153⁰⁰

BASE CABINETS DRAWERS

Base cabinets with drawers. This can allow for more defined organization, but can also restrict storage space height.

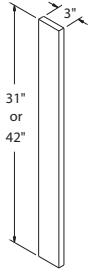


3-Drawer Base 35" High x 23 3/4" Deep

12" wide \$159⁰⁰
 15" wide \$161⁰⁰
 18" wide \$173⁰⁰
 24" wide \$189⁰⁰

Fillers

Fillers are used to fill spaces between cabinets or against walls.

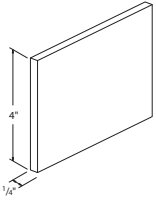


Base Cabinet Filler
31" High x 3" Wide x 3/4" Thick
 31" high \$19⁰⁰

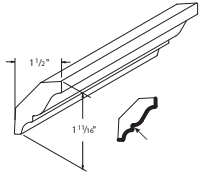
Wall Cabinet Filler
42" High x 3" Wide x 3/4" Thick
 42" high \$21⁰⁰

Moldings

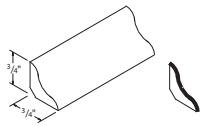
Moldings are accessory pieces used for finishing a cabinet installation.



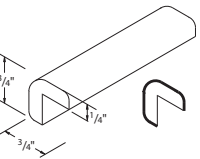
Toekick
4" High x 1/4" Thick x 96" Long
 TOEKICK \$12⁰⁰



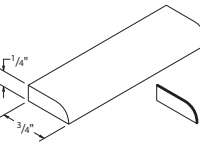
Crown
1 11/16" High x 1 1/2" Deep x 96" Long
 MCROWN8 \$40⁰⁰



Cove
3/4" High x 3/4" Deep x 96" Long
 MCV8 \$17⁰⁰



Outside Corner
3/4" High x 3/4" Deep x 96" Long
 MOCW8 \$17⁰⁰



Scribe
1/4" High x 3/4" Deep x 96" Long
 MSW8 \$10⁰⁰

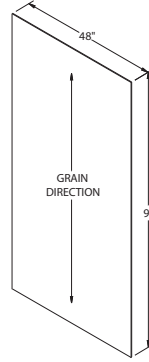
Touch-up Kit



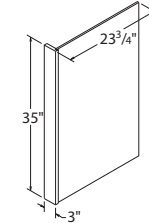
Touch-up Kit
Includes 1 Felt Marker, 1 Putty Stick
 TUKIT \$18⁰⁰

Panels

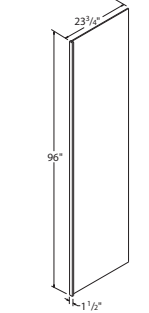
Panels are used to cover the ends of appliances, backs of cabinets, or ends of a cabinet run.



Plywood Sheet
48" Wide x 96" Tall x 3/16" Thick
 P4896 \$139⁰⁰



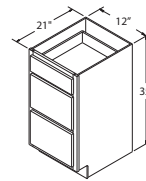
Dishwasher End Panel
35" Tall x 23 2/4" Deep
 PRLY335 \$63⁰⁰



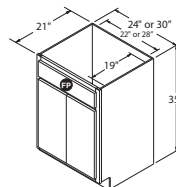
Refrigerator End Panel
96" Tall x 23 2/4" Deep
 1.5REP96 \$160⁰⁰

Vanities

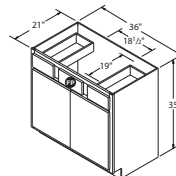
Vanities are cabinets used in bathrooms and are shallower in depth as compared to kitchen cabinets.



3 Drawer Vanity Base
35" High x 21" Deep
 12" wide \$160⁰⁰



Double Door Vanity Base
35" High x 21" Deep
 24" wide \$140⁰⁰
 30" wide \$165⁰⁰



Double Door, 2 Drawer Vanity Base
35" High x 21" Deep
 36" wide \$250⁰⁰