



# WOOD FLOORS PLUS

Maryland's Largest Flooring Store!

# STOCKING CABINETS

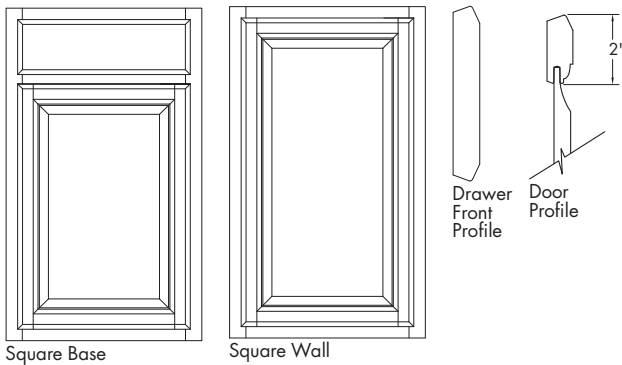


Find all the essentials you need to create smart spaces with mainstream styles and colors at a great value for any kitchen, bathroom, or storage space design.

## CHESNEY

### AUTUMN • SARSAPARILLA

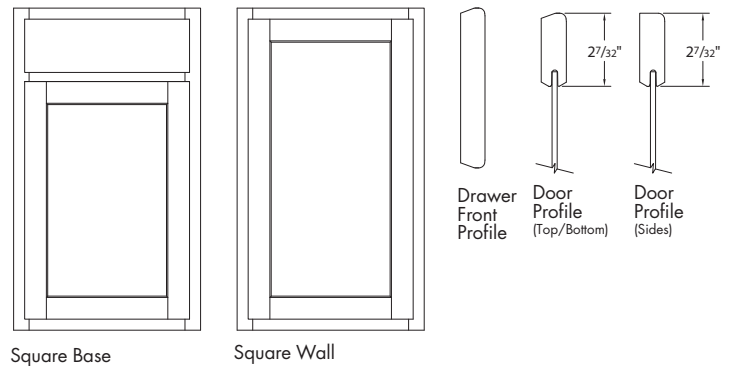
- Partial overlay
- Birch veneered raised center panel door
- Beveled slab profile drawer front



## BOWMAN

### WHITE PAINT • FLAGSTONE • UMBER

- Partial overlay
- Flat veneered center panel door
- 3/4" Thick solid door rail



### Wall Cabinet Construction

- 1/2" Plywood top and bottom
- 3/4" Plywood adjustable shelves (15 lbs. maximum weight/sq. ft.)
- 3/4" x 1 1/2" Solid wood face frame
- 3/8" Plywood sides and back

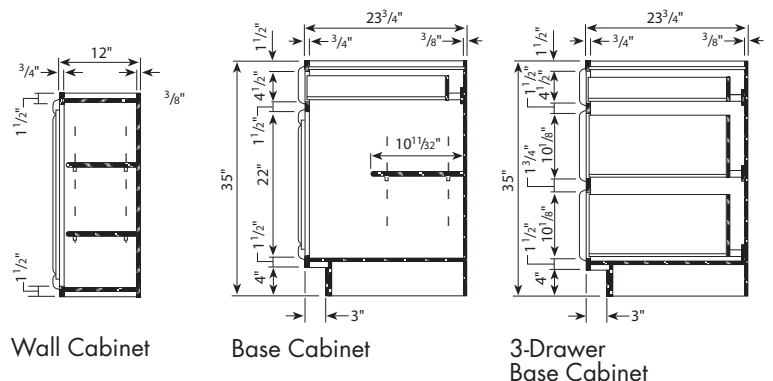
### Base Cabinet Construction

- Two plywood stretcher rails
- 3/8" Plywood back, bottom and sides
- 3/4" x 1 1/2" Solid wood face frame
- 3/4" Half-depth plywood shelf
- 3/8" x 4" High plywood recessed toekick (recessed 3" deep)

### Drawer Box Construction

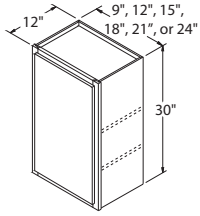
- 3/4" Nominal thick wood dovetailed drawer sides, front and back with clear topcoat
- 1/4" Thick plywood drawer bottom, fully captured for added strength and optimum load capacity
- Full-extension undermount drawer guides with Smart Stop self-closing mechanism

### Cabinet Dimension Details



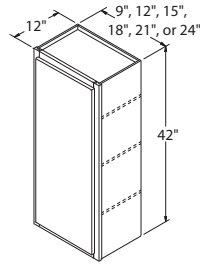
# WALL CABINETS STRAIGHT

Wall cabinets fill the space of the wall between appliances and fixtures.



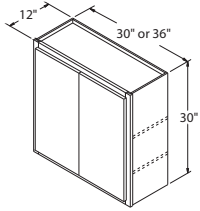
## Single Door Wall 30" High x 12" Deep

|          |                     |                             |
|----------|---------------------|-----------------------------|
| 9" wide  | \$82 <sup>00</sup>  | \$103 <sup>00</sup> (White) |
| 12" wide | \$82 <sup>00</sup>  | \$103 <sup>00</sup> (White) |
| 15" wide | \$90 <sup>00</sup>  | \$113 <sup>00</sup> (White) |
| 18" wide | \$98 <sup>00</sup>  | \$123 <sup>00</sup> (White) |
| 21" wide | \$110 <sup>00</sup> | \$138 <sup>00</sup> (White) |
| 24" wide | \$115 <sup>00</sup> | \$144 <sup>00</sup> (White) |



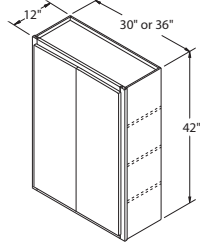
## Single Door Wall 42" High x 12" Deep

|          |                     |                             |
|----------|---------------------|-----------------------------|
| 9" wide  | \$107 <sup>00</sup> | \$134 <sup>00</sup> (White) |
| 12" wide | \$107 <sup>00</sup> | \$134 <sup>00</sup> (White) |
| 15" wide | \$121 <sup>00</sup> | \$152 <sup>00</sup> (White) |
| 18" wide | \$129 <sup>00</sup> | \$162 <sup>00</sup> (White) |
| 21" wide | \$145 <sup>00</sup> | \$182 <sup>00</sup> (White) |
| 24" wide | \$153 <sup>00</sup> | \$192 <sup>00</sup> (White) |



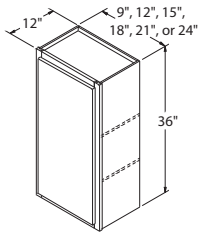
## Double Door Wall 30" High x 12" Deep

|          |                     |                             |
|----------|---------------------|-----------------------------|
| 30" wide | \$132 <sup>00</sup> | \$165 <sup>00</sup> (White) |
| 36" wide | \$150 <sup>00</sup> | \$188 <sup>00</sup> (White) |



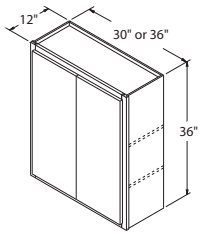
## Double Door Wall 42" High x 12" Deep

|          |                     |                             |
|----------|---------------------|-----------------------------|
| 30" wide | \$174 <sup>00</sup> | \$218 <sup>00</sup> (White) |
| 36" wide | \$198 <sup>00</sup> | \$248 <sup>00</sup> (White) |



## Single Door Wall 36" High x 12" Deep

|          |                     |                             |
|----------|---------------------|-----------------------------|
| 9" wide  | \$96 <sup>00</sup>  | \$120 <sup>00</sup> (White) |
| 12" wide | \$96 <sup>00</sup>  | \$120 <sup>00</sup> (White) |
| 15" wide | \$104 <sup>00</sup> | \$130 <sup>00</sup> (White) |
| 18" wide | \$113 <sup>00</sup> | \$142 <sup>00</sup> (White) |
| 21" wide | \$124 <sup>00</sup> | \$155 <sup>00</sup> (White) |
| 24" wide | \$134 <sup>00</sup> | \$168 <sup>00</sup> (White) |



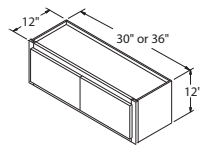
## Double Door Wall 36" High x 12" Deep

|          |                     |                             |
|----------|---------------------|-----------------------------|
| 30" wide | \$153 <sup>00</sup> | \$192 <sup>00</sup> (White) |
| 36" wide | \$174 <sup>00</sup> | \$218 <sup>00</sup> (White) |

# WALL CABINETS OVER APPLIANCE

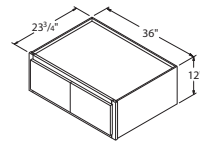
Wall Cabinets that are usually located above microwave hoods, range vents or refrigerators.

23 3/4" deep refrigerator wall cabinets must be supported on 3 sides.



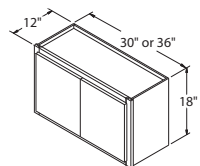
## Double Door Wall 12" High x 12" Deep

|          |                     |                             |
|----------|---------------------|-----------------------------|
| 30" wide | \$89 <sup>00</sup>  | \$112 <sup>00</sup> (White) |
| 36" wide | \$105 <sup>00</sup> | \$132 <sup>00</sup> (White) |



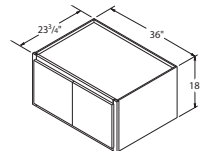
## Double Door Refrigerator Wall 12" High x 23 3/4" Deep

|          |                     |                             |
|----------|---------------------|-----------------------------|
| 36" wide | \$120 <sup>00</sup> | \$150 <sup>00</sup> (White) |
|----------|---------------------|-----------------------------|



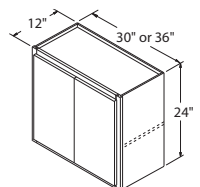
## Double Door Wall 18" High x 12" Deep

|          |                     |                             |
|----------|---------------------|-----------------------------|
| 30" wide | \$105 <sup>00</sup> | \$132 <sup>00</sup> (White) |
| 36" wide | \$114 <sup>00</sup> | \$143 <sup>00</sup> (White) |



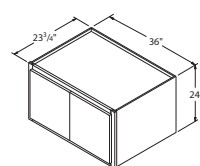
## Double Door Refrigerator Wall 18" High x 23 3/4" Deep

|          |                     |                             |
|----------|---------------------|-----------------------------|
| 36" wide | \$129 <sup>00</sup> | \$162 <sup>00</sup> (White) |
|----------|---------------------|-----------------------------|



## Double Door Wall 24" High x 12" Deep

|          |                     |                             |
|----------|---------------------|-----------------------------|
| 30" wide | \$120 <sup>00</sup> | \$150 <sup>00</sup> (White) |
| 36" wide | \$131 <sup>00</sup> | \$164 <sup>00</sup> (White) |

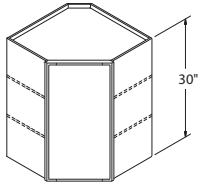
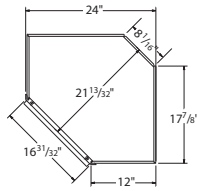


## Double Door Refrigerator Wall 24" High x 23 3/4" Deep

|          |                     |                             |
|----------|---------------------|-----------------------------|
| 36" wide | \$146 <sup>00</sup> | \$183 <sup>00</sup> (White) |
|----------|---------------------|-----------------------------|

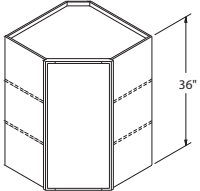
# WALL CABINETS CORNER

Wall corner cabinets are used to turn corners in your kitchen. They take up 24 inches of wall space on both sides of the corner and feature a diagonal door for easier access.



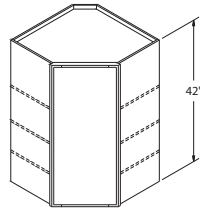
## Diagonal Wall Corner 30" High

24" wide **\$138<sup>00</sup>** **\$173<sup>00</sup> (White)**



## Diagonal Wall Corner 36" High

24" wide **\$160<sup>00</sup>** **\$200<sup>00</sup> (White)**

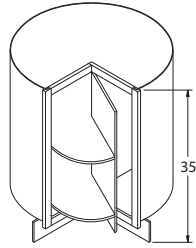


## Diagonal Wall Corner 42" High

24" wide **\$186<sup>00</sup>** **\$233<sup>00</sup> (White)**

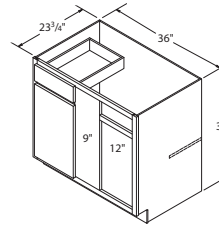
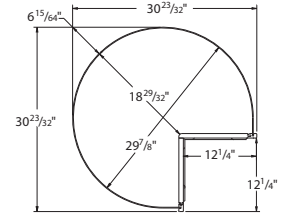
# BASE CABINETS CORNER

Base corner cabinets are used to turn corners in the kitchen. The Lazy Susan cabinet offers a great solution for storage, while the Blind Base is convenient for small or tight kitchen corners.



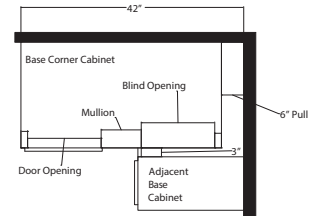
## Lazy Susan Roto 35" High

36" wide **\$229<sup>00</sup>** **\$287<sup>00</sup> (White)**



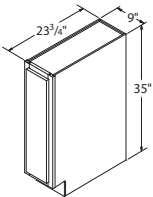
## Blind Base Corner 35" High Ships with 3" Filler

42" wide (36" Act) **\$182<sup>00</sup>** **\$228<sup>00</sup> (White)**



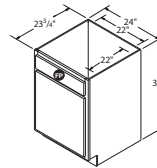
# BASE CABINETS STRAIGHT

Base cabinets that fill the space of the wall between appliances and fixtures.



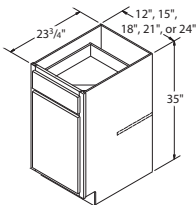
## Single Door Base 35" High x 23 3/4" Deep

9" wide **\$93<sup>00</sup>** **\$117<sup>00</sup> (White)**



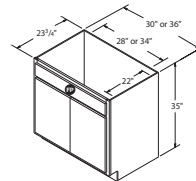
## Single Door Sink Base 35" High x 23 3/4" Deep

24" wide **\$121<sup>00</sup>** **\$152<sup>00</sup> (White)**



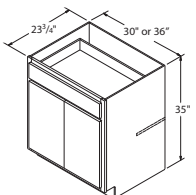
## Single Door/Drawer Base 35" High x 23 3/4" Deep

|          |                           |                                   |
|----------|---------------------------|-----------------------------------|
| 12" wide | <b>\$118<sup>00</sup></b> | <b>\$148<sup>00</sup> (White)</b> |
| 15" wide | <b>\$122<sup>00</sup></b> | <b>\$153<sup>00</sup> (White)</b> |
| 18" wide | <b>\$130<sup>00</sup></b> | <b>\$163<sup>00</sup> (White)</b> |
| 21" wide | <b>\$147<sup>00</sup></b> | <b>\$184<sup>00</sup> (White)</b> |
| 24" wide | <b>\$156<sup>00</sup></b> | <b>\$195<sup>00</sup> (White)</b> |



## Double Door Sink Base 35" High x 23 3/4" Deep

|          |                           |                                   |
|----------|---------------------------|-----------------------------------|
| 30" wide | <b>\$134<sup>00</sup></b> | <b>\$168<sup>00</sup> (White)</b> |
| 36" wide | <b>\$153<sup>00</sup></b> | <b>\$192<sup>00</sup> (White)</b> |



## Double Door/Single Drawer Base 35" High x 23 3/4" Deep

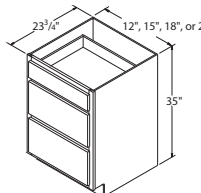
|          |                           |                                   |
|----------|---------------------------|-----------------------------------|
| 30" wide | <b>\$191<sup>00</sup></b> | <b>\$239<sup>00</sup> (White)</b> |
| 36" wide | <b>\$205<sup>00</sup></b> | <b>\$257<sup>00</sup> (White)</b> |

# BASE CABINETS SINKS

Sink Base Cabinets feature a false drawer panel to allow space to locate a drop-in or under-mounted sink. Can also be used for a drop-in cooktop.

# BASE CABINETS DRAWERS

Base cabinets with drawers. This can allow for more defined organization, but can also restrict storage space height.

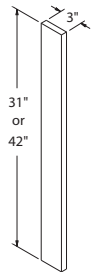


## 3-Drawer Base 35" High x 23 3/4" Deep

|          |                           |                                   |
|----------|---------------------------|-----------------------------------|
| 12" wide | <b>\$159<sup>00</sup></b> | <b>\$199<sup>00</sup> (White)</b> |
| 15" wide | <b>\$161<sup>00</sup></b> | <b>\$202<sup>00</sup> (White)</b> |
| 18" wide | <b>\$173<sup>00</sup></b> | <b>\$217<sup>00</sup> (White)</b> |
| 24" wide | <b>\$189<sup>00</sup></b> | <b>\$237<sup>00</sup> (White)</b> |

# Fillers

Fillers are used to fill spaces between cabinets or against walls.



## Base Cabinet Filler 31" High x 3" Wide x 3/4" Thick

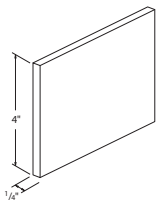
31" high      \$19<sup>00</sup>      \$19<sup>00</sup> (White)

## Wall Cabinet Filler 42" High x 3" Wide x 3/4" Thick

42" high      \$21<sup>00</sup>      \$21<sup>00</sup> (White)

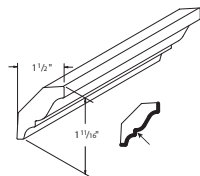
# Moldings

Moldings are accessory pieces used for finishing a cabinet installation.



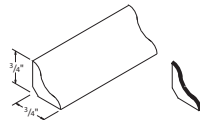
## Toekick 4" High x 1/4" Thick x 96" Long

TOEKICK      \$12<sup>00</sup>      \$20<sup>00</sup> (White)



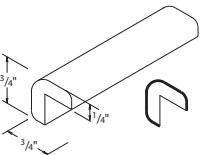
## Crown 1 11/16" High x 1 1/2" Deep x 96" Long

MCROWN8      \$40<sup>00</sup>      \$49<sup>00</sup> (White)



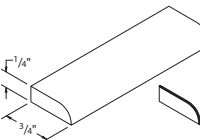
## Cove 3/4" High x 3/4" Deep x 96" Long

MCV8      \$17<sup>00</sup>      \$19<sup>00</sup> (White)



## Outside Corner 3/4" High x 3/4" Deep x 96" Long

MOCW8      \$17<sup>00</sup>      \$19<sup>00</sup> (White)

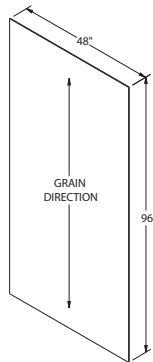


## Scribe 1/4" High x 3/4" Deep x 96" Long

MSW8      \$10<sup>00</sup>      \$15<sup>00</sup> (White)

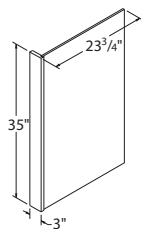
# Panels

Panels are used to cover the ends of appliances, backs of cabinets, or ends of a cabinet run.



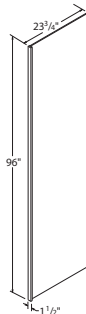
## Plywood Sheet 48" Wide x 96" Tall x 3/16" Thick

P4896      \$139<sup>00</sup>      \$149<sup>00</sup> (White)



## Dishwasher End Panel 35" Tall x 23 2/4" Deep

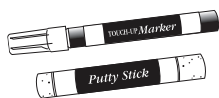
PRLY335      \$63<sup>00</sup>      \$63<sup>00</sup> (White)



## Refrigerator End Panel 96" Tall x 23 2/4" Deep

1.5REP96      \$160<sup>00</sup>      \$160<sup>00</sup> (White)

# Touch-up Kit



## Touch-up Kit Includes 1 Felt Marker, 1 Putty Stick

TUKIT      \$18<sup>00</sup>