



WOOD FLOORS PLUS

Maryland's Largest Flooring Store!

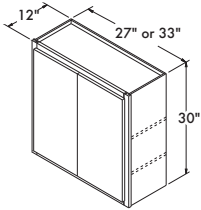
EFFECTIVE DEC 2024

SPECIAL-ORDER CABINETS

6-8 WEEK LEAD-TIME

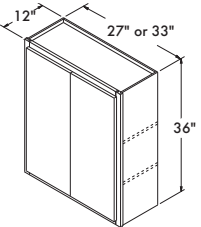
WALL CABINETS

Double Door Wall 30" High x 12" Deep



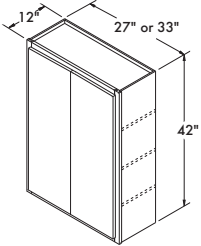
27" wide W2730	SARSAPARILLA, QUILL SNOW, STEEL, STONE GRAY \$237⁰⁰
33" wide W3330	\$272⁰⁰

Double Door Wall 36" High x 12" Deep



27" wide W2736	SARSAPARILLA, QUILL SNOW, STEEL, STONE GRAY \$275⁰⁰
33" wide W3336	\$318⁰⁰

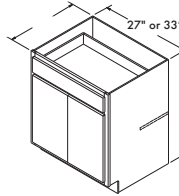
Double Door Wall 42" High x 12" Deep



27" wide W2742	SARSAPARILLA, QUILL SNOW, STEEL, STONE GRAY \$309⁰⁰
33" wide W3342	\$358⁰⁰

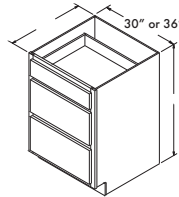
BASE CABINETS

Double Door/Single Drawer Base



27" wide B27	SARSAPARILLA, QUILL SNOW, STEEL, STONE GRAY \$334⁰⁰
33" wide B33	\$378⁰⁰

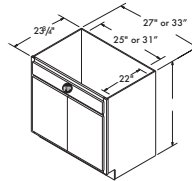
3-Drawer Base



30" wide DB30	SARSAPARILLA, QUILL SNOW, STEEL, STONE GRAY \$569⁰⁰
36" wide DB36	\$633⁰⁰

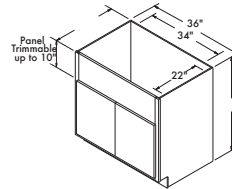
BASE CABINETS SINKS

Double Door Sink Base



27" wide SB27	SARSAPARILLA, QUILL SNOW, STEEL, STONE GRAY \$237⁰⁰
33" wide SB33	\$272⁰⁰

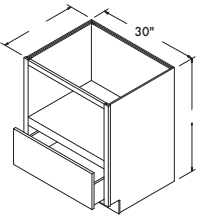
Country Sink Base



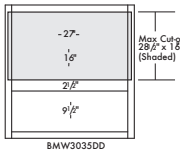
36" wide CNTRYSB36	SARSAPARILLA, QUILL SNOW, STEEL, STONE GRAY \$432⁰⁰
--------------------	--

BASE CABINETS OTHER

Built-in Base Microwave Cabinet * Matching interior



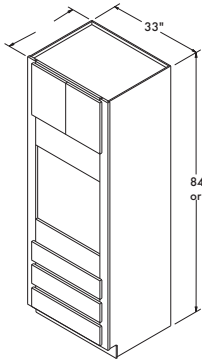
30" wide BMW3035DD	SARSAPARILLA, QUILL SNOW, STEEL, STONE GRAY \$542⁰⁰
--------------------	--



TALL OVEN CABINETS PANTRY CABINETS

All 90" and 96" cabinets are shipped with unfinished loose toekick sub assembly, additional material may be needed to cover.

All 90" and 96" cabinets are shipped with unfinished loose toekick sub assembly, additional material may be needed to cover.



84" Tall Oven Cabinet

33" wide OCS333B

SARSAPARILLA, QUILL
SNOW, STEEL, STONE GRAY
\$823⁰⁰

84", 90"
or 96"

90" Tall Oven Cabinet

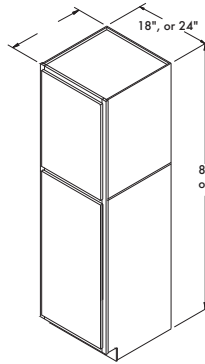
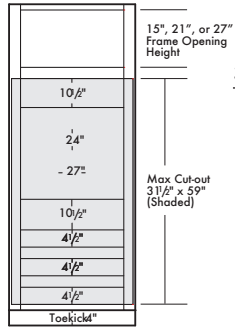
33" wide OCS3390B

SARSAPARILLA, QUILL
SNOW, STEEL, STONE GRAY
\$963⁰⁰

96" Tall Oven Cabinet

33" wide OCS3396B

SARSAPARILLA, QUILL
SNOW, STEEL, STONE GRAY
\$1084⁰⁰



84" Tall Pantry

* Pantry is shipped with 4 shelves
* Snow 24" pantry comes with double doors

24" wide U24 (L/R)

SARSAPARILLA, QUILL
SNOW, STEEL, STONE GRAY

\$562⁰⁰

90" Tall Pantry

* Pantry is shipped with 4 shelves
* Snow 24" pantry comes with double doors

18" wide U1890 (L/R)

SARSAPARILLA, QUILL
SNOW, STEEL, STONE GRAY

\$591⁰⁰

24" wide U2490 (L/R)

\$716⁰⁰

96" Tall Pantry

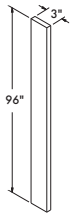
* Pantry is shipped with 4 shelves
* Snow 24" pantry comes with double doors

24" wide U2496 (L/R)

SARSAPARILLA, QUILL
SNOW, STEEL, STONE GRAY

\$817⁰⁰

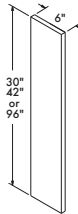
FILLERS



3" Wide x 3/4" Thick Filler

96" long F396

SARSAPARILLA, QUILL
SNOW, STEEL, STONE GRAY
\$88⁰⁰



6" Wide x 3/4" Thick Filler

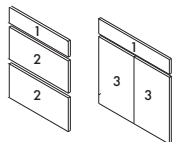
30" long F631

96" long F696

SARSAPARILLA, QUILL
SNOW, STEEL, STONE GRAY
\$53⁰⁰

\$123⁰⁰

REPLACEMENT PARTS

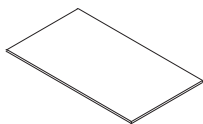


DRAWER FRONTS AND DOORS

1 - Top Drawer **\$58⁰⁰**

2 - Lower Drawer **\$58⁰⁰**

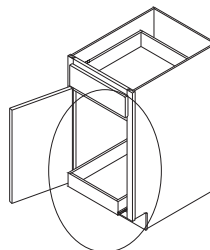
3 - (L or R) Door **\$87⁰⁰**



Shelves - 1 Pack

12" Shelf x (width) **\$41⁰⁰**

CABINET ACCESSORIES



Roll Tray Kits

* Field Installation Only
* Furniture Boards Construction with standard drawer glides

15" wide RT15 **\$67⁰⁰**

18" wide RT18 **\$67⁰⁰**

24" wide RT24 **\$67⁰⁰**

30" wide RT30 **\$80⁰⁰**

36" wide RT36 **\$80⁰⁰**