



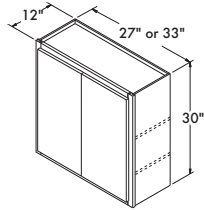
# WOOD FLOORS PLUS

Maryland's Largest Flooring Store!  
EFFECTIVE SEPTEMBER 2023

## SPECIAL-ORDER CABINETS

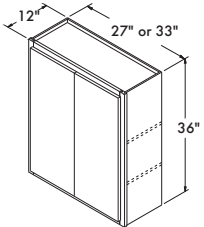
6-8 WEEK  
LEAD-TIME

### WALL CABINETS



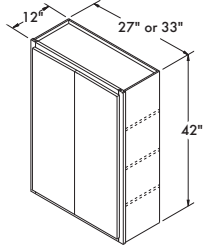
**Double Door Wall**  
**30" High x 12" Deep**

27" wide W2730	SARSAPARILLA, FLAGSTONE SNOW, STEEL, STONE GRAY <b>\$237<sup>00</sup></b>
33" wide W3330	<b>\$272<sup>00</sup></b>



**Double Door Wall**  
**36" High x 12" Deep**

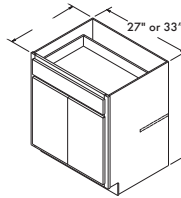
27" wide W2736	SARSAPARILLA, FLAGSTONE SNOW, STEEL, STONE GRAY <b>\$275<sup>00</sup></b>
33" wide W3336	<b>\$318<sup>00</sup></b>



**Double Door Wall**  
**42" High x 12" Deep**

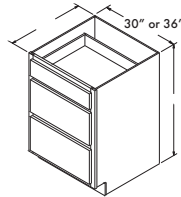
27" wide W2742	SARSAPARILLA, FLAGSTONE SNOW, STEEL, STONE GRAY <b>\$309<sup>00</sup></b>
33" wide W3342	<b>\$358<sup>00</sup></b>

### BASE CABINETS



**Double Door/Single Drawer Base**

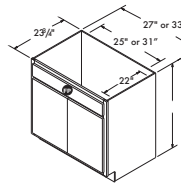
27" wide B27	SARSAPARILLA, FLAGSTONE SNOW, STEEL, STONE GRAY <b>\$334<sup>00</sup></b>
33" wide B33	<b>\$378<sup>00</sup></b>



**3-Drawer Base**

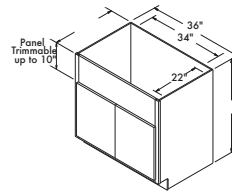
30" wide DB30	SARSAPARILLA, FLAGSTONE SNOW, STEEL, STONE GRAY <b>\$569<sup>00</sup></b>
36" wide DB36	<b>\$633<sup>00</sup></b>

### BASE CABINETS SINKS



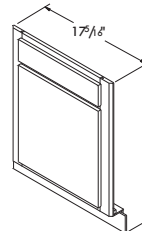
**Double Door Sink Base**

27" wide SB27	SARSAPARILLA, FLAGSTONE SNOW, STEEL, STONE GRAY <b>\$237<sup>00</sup></b>
33" wide SB33	<b>\$272<sup>00</sup></b>



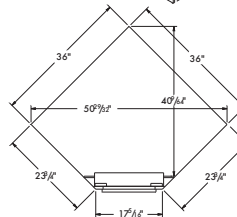
**Country Sink Base**

36" wide CNTRYB36	SARSAPARILLA, FLAGSTONE SNOW, STEEL, STONE GRAY <b>\$432<sup>00</sup></b>
-------------------	--



**Sink Front Corner**

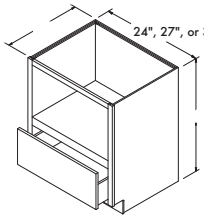
36" x 36" SFC36	SARSAPARILLA, FLAGSTONE SNOW, STEEL, STONE GRAY <b>\$186<sup>00</sup></b>
-----------------	--



TOPVIEW

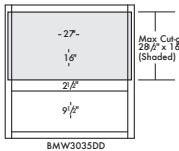
- \* Cabinet is cabinet front and floor only (Not entire cabinet box)
- \* Toekick shipped loose
- \* Cabinet must be installed between 2 cabinets
- \* For sufficient dishwasher door clearance and loading/unloading space, a 15" wide base cabinet is recommended for use between sink base diagonal corner cabinet and dishwasher
- \* Max sink width 25 3/4"

### BASE CABINETS OTHER



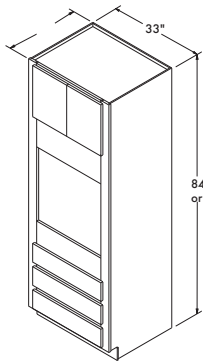
**Built-in Base Microwave Cabinet**  
**\* Matching interior**

30" wide BMW3035DD	SARSAPARILLA, FLAGSTONE SNOW, STEEL, STONE GRAY <b>\$542<sup>00</sup></b>
--------------------	--



# TALL OVEN CABINETS PANTRY CABINETS

All 90" and 96" cabinets are shipped with unfinished loose toekick sub assembly, additional material may be needed to cover.



## 84" Tall Oven Cabinet

33" wide OCSD33B

SARSAPARILLA, FLAGSTONE  
SNOW, STEEL, STONE GRAY  
**\$823<sup>00</sup>**

84", 90"  
or 96"

## 90" Tall Oven Cabinet

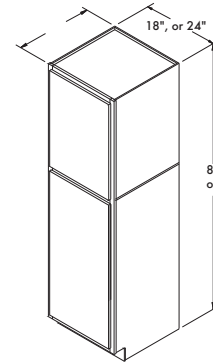
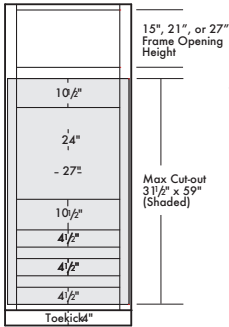
33" wide OCSD3390B

SARSAPARILLA, FLAGSTONE  
SNOW, STEEL, STONE GRAY  
**\$963<sup>00</sup>**

## 96" Tall Oven Cabinet

33" wide OCSD3396B

SARSAPARILLA, FLAGSTONE  
SNOW, STEEL, STONE GRAY  
**\$1084<sup>00</sup>**



## 84" Tall Pantry

\* Pantry is shipped with 4 shelves  
\* Snow 24" pantry comes with double doors

18" wide U18 (L/R)

SARSAPARILLA, FLAGSTONE  
SNOW, STEEL, STONE GRAY

**\$457<sup>00</sup>**

24" wide U24 (L/R)

**\$562<sup>00</sup>**

## 90" Tall Pantry

\* Pantry is shipped with 4 shelves  
\* Snow 24" pantry comes with double doors

18" wide U1890 (L/R)

SARSAPARILLA, FLAGSTONE  
SNOW, STEEL, STONE GRAY

**\$591<sup>00</sup>**

24" wide U2490 (L/R)

**\$716<sup>00</sup>**

## 96" Tall Pantry

\* Pantry is shipped with 4 shelves  
\* Snow 24" pantry comes with double doors

18" wide U1896 (L/R)

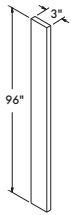
SARSAPARILLA, FLAGSTONE  
SNOW, STEEL, STONE GRAY

**\$674<sup>00</sup>**

24" wide U2496 (L/R)

**\$817<sup>00</sup>**

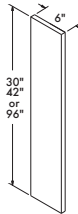
## FILLERS



### 3" Wide x 3/4" Thick Filler

96" long F396

SARSAPARILLA, FLAGSTONE  
SNOW, STEEL, STONE GRAY  
**\$88<sup>00</sup>**



### 6" Wide x 3/4" Thick Filler

30" long F631

SARSAPARILLA, FLAGSTONE  
SNOW, STEEL, STONE GRAY  
**\$53<sup>00</sup>**

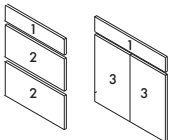
42" long F642

**\$65<sup>00</sup>**

96" long F696

**\$123<sup>00</sup>**

## REPLACEMENT PARTS

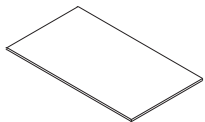


### DRAWER FRONTS AND DOORS

1 - Top Drawer **\$58<sup>00</sup>**

2 - Lower Drawer **\$58<sup>00</sup>**

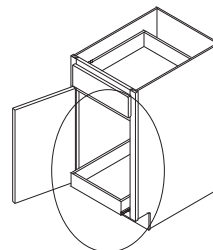
3 - (L or R) Door **\$87<sup>00</sup>**



### Shelves - 1 Pack

12" Shelf x (width) **\$41<sup>00</sup>**

## CABINET ACCESSORIES



### Roll Tray Kits

\* Field Installation Only  
\* Furniture Boards Construction with standard drawer glides

15" wide RT15

**\$67<sup>00</sup>**

18" wide RT18

**\$67<sup>00</sup>**

24" wide RT24

**\$67<sup>00</sup>**

30" wide RT30

**\$80<sup>00</sup>**

36" wide RT36

**\$80<sup>00</sup>**